

Te Puna Kindergarten Tikanga Whakaako/Philosophy



Ahakoā nō hea, to tatou whare, whakaruruhau ki kōnei

Wherever you come from, there is a place here for you

Morris Wharekawa (Tohunga whakairo/Master carver)

Mōhiotanga Whānau /Manaakitanga:

At Te Puna Kindergarten you are welcomed into a wider whanau, where we encourage all families to be active participants in our curriculum, supporting children's learning, sense of belonging, cultural connection and diversity.

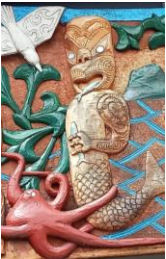
Key attributes: Welcoming; Community focus; Compassion; Generosity; Empathy.



Te Pura/Kaitiakitanga

We understand that, in order for our community to thrive, sustaining and protecting a strong connection with the natural environment and each other is key. Therefore, we encourage our tamariki to think deeply about their actions so that they are guided by empathy, compassion and fairness.

Key attributes: Advocacy, Proactiveness, Social and Environmental Justice



Papatūānuku/Whānaungatanga

At Te Puna Kindergarten we aspire to create and maintain warm and responsive relationships throughout our learning community. We actively build relationships and connections with the wider community to broaden learning opportunities and perspectives to tamariki.

Key attributes: Sense of belonging, Inclusiveness, Collaboration, Reflection, Relationships



Poripori/Ako

We aspire to create an environment where tamariki actively engage through play and their interests with and alongside peers and kaiako. Reciprocity and respect are deeply embedded in the shared teaching and learning journey here at Te Puna Kindergarten.

Key attributes: Active engagement, Reciprocity, Growth Mindset, Curiosity, Empowerment



Maramatanga Whānau/Rangatiratanga

By the time tamariki transition from our kindergarten, they will feel empowered to exercise self-determination, advocate for themselves, and demonstrate kindness and support for others in their community. Throughout their learning journey with us, we encourage children to actively participate in our kindergarten rituals and embrace cultural responsiveness. We empower tamariki to take responsibility and have agency over their own learning.

Key attributes: Responsibility, Responsiveness, Respect, Kindness, Leaderful.

